

Mounting the Castle! 1876

A quick review

Col A J Mountcastle estate purchase 1875

School moves to 35 acre campus south of present campus

Boardwalk?



A. J. Mountcastle Estate / Carson Hall

Mounting the Castle! 1876

Later the
Samuel Hull
Rankin home

Located just
behind current
Burger King

Front faced
north ... to Ellis
Street

Treatise on
support of
Baptist higher
education by J.
W. H. Coker at

East Tennessee Baptist Association meeting in 1879 in Newport TN

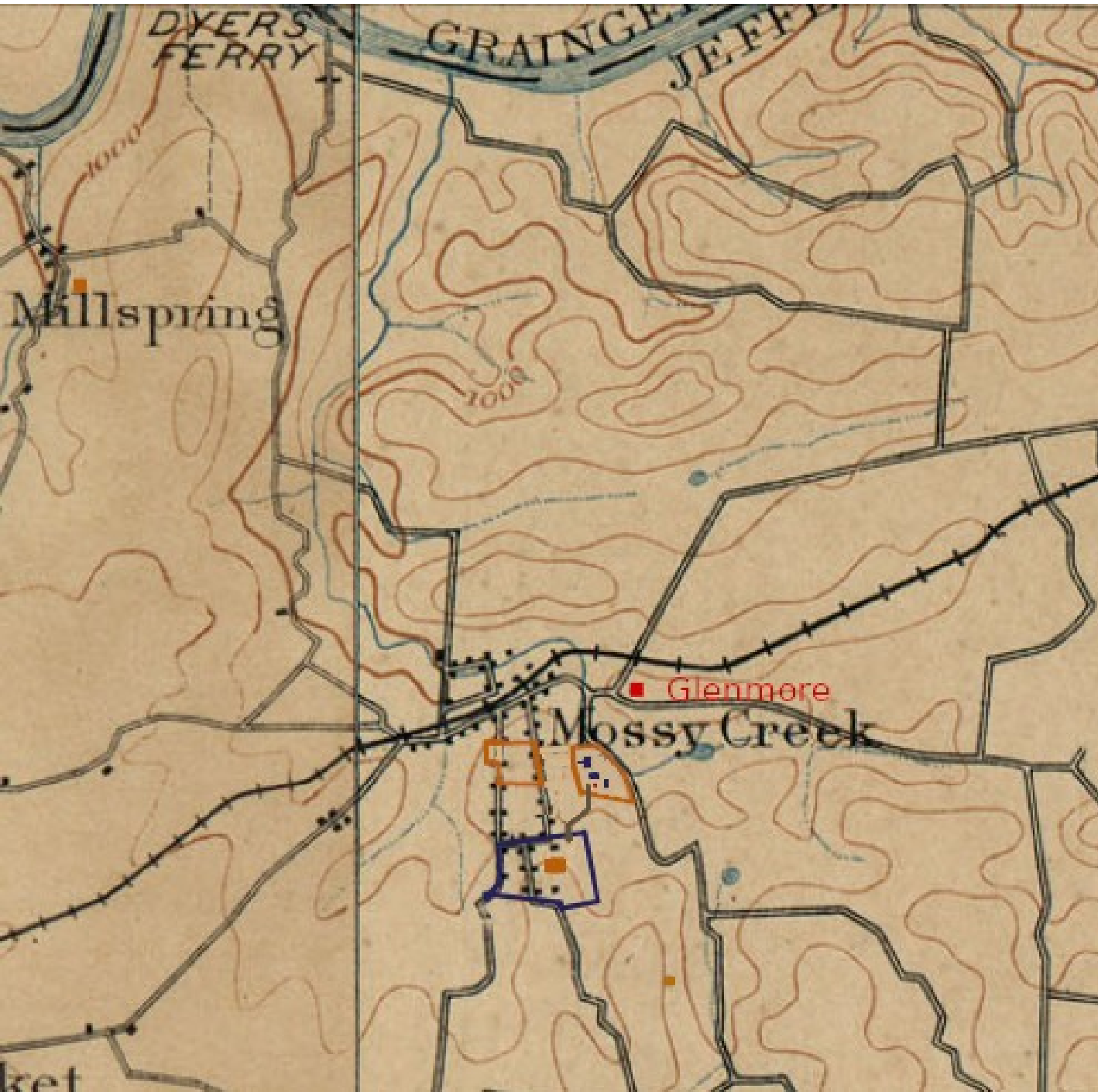


Newman College 1882

Predecessor
Local Female
academies
established at
the Masonic
Lodge and
Glenmore

Newman
College
established in
1882 in "old"
CC buildings
as women's
branch of the
school per
1881 catalog

W. T. Russell
president
1882-1889



Apart and A Part? 1888

Newman College named for prominent Newman family

Separate Boards of Trustees

Carson College has
“oversight”

Newman College has own
state charter (1885)

Newman College is deeded
the “central block” of current
campus

W. T. Russell is Newman
president AND Carson
provost simultaneously

Both schools covered under
same catalog

Buildings already named
Newman dormitories



Apart and A Part? 1888

Reference photo p3

Newman College buildings from red spot looking north

All Carson College collegiate students housed on Mountcastle campus

Possible housing of high school students on Newman campus

Possible route of boardwalk shown in brown.

Newman College uniforms consist of Navy Blue Flannel

Treatise on support of women's education in C-N catalog 1888

Treatise on support women's higher education by R A Henderson 1888



A Party 1889

Festivities in Spring 1889 led by future TN Governor Ben Wade Hooper.

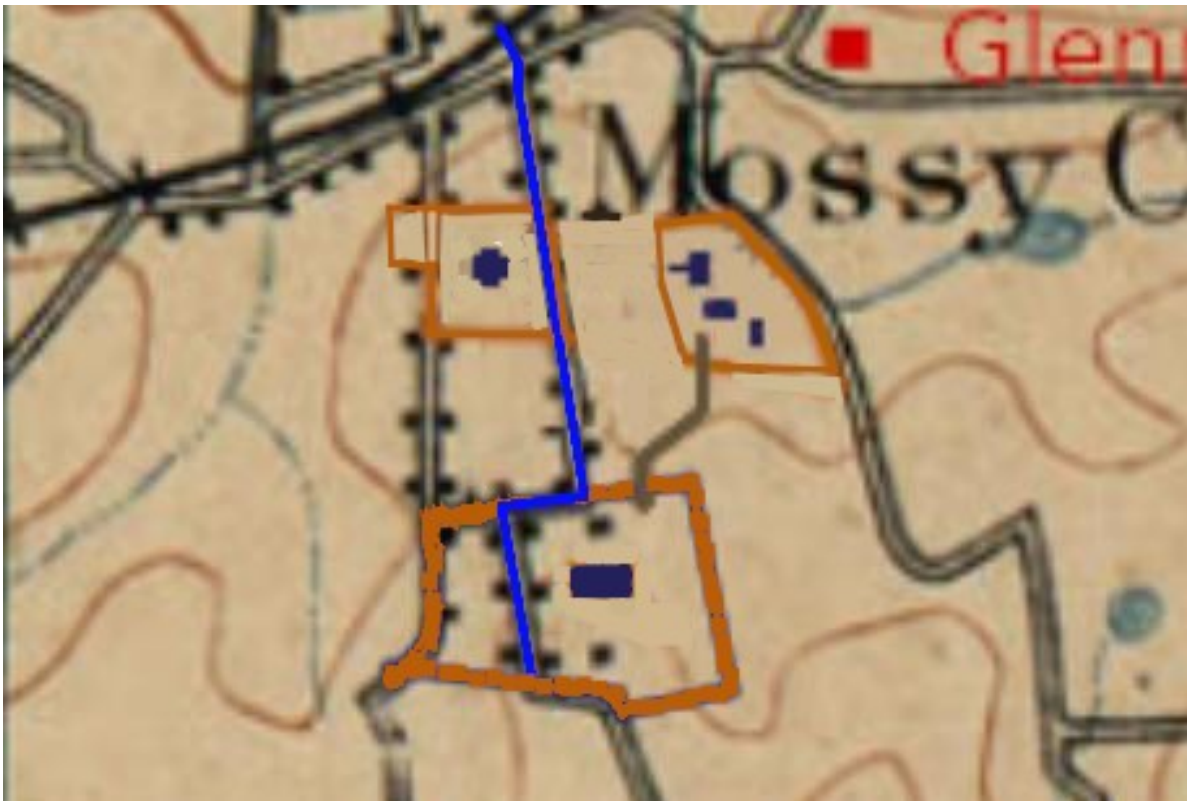
A marriage between Carson and Newman Colleges officiated by Ben Hooper and J W Bundren

Bridesmaids represented local colleges including Maryville, UT, Tusculum, etc

ETSU not in existence yet

“Russell’s Chickens” were not happy with the representation of the bride

Properties merger financially completed in April 1898



New Expansion 1892

Carsonville-Mossy Creek Mule Driven rail line (1892-1894)

All Carson College collegiate students housed on Mountcastle campus

All Newman College students housed in Newman Dormitories

Construction of Henderson #1 (1890-1897)

First two floors constructed 1890-1892

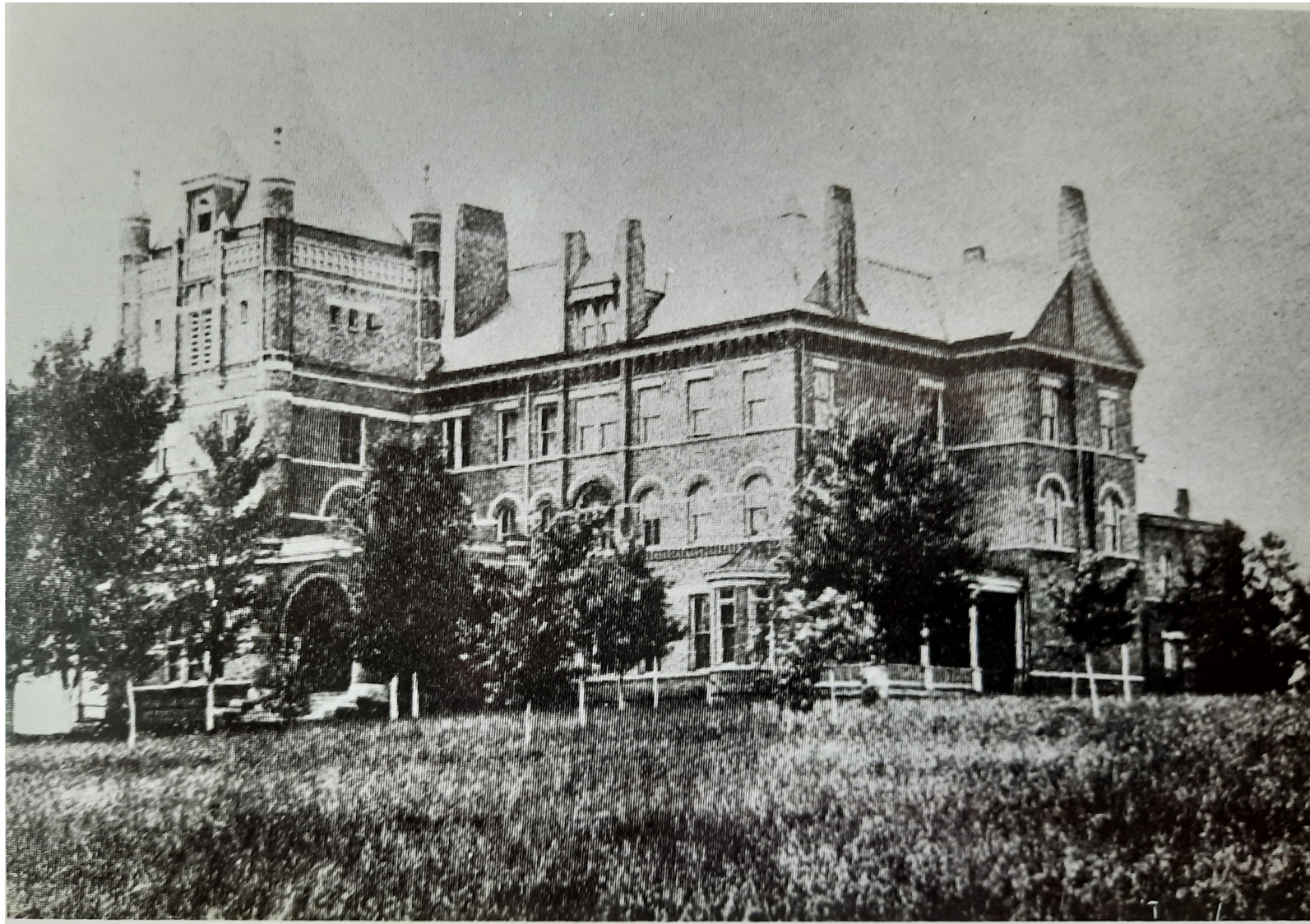
Basement dug first by local labor with bricks fired on location near the old ROTC flagpole using clay obtained from excavation and led by D M Coile

Base: 150ft X 165ft

Current building (Henderson #3) base: 225ft X 120ft

View is from west (Russell Ave)





Henderson #1 completed 1897

All C-N female
students then
housed on
Mountcastle campus

View is from SW
(current Maples
library)

Projected Cost:
\$45,000; Actual
Cost: \$33,000

Funded by local and
regional Baptist
organizations



Henderson #1

Contained a massive
auditorium seating
1200

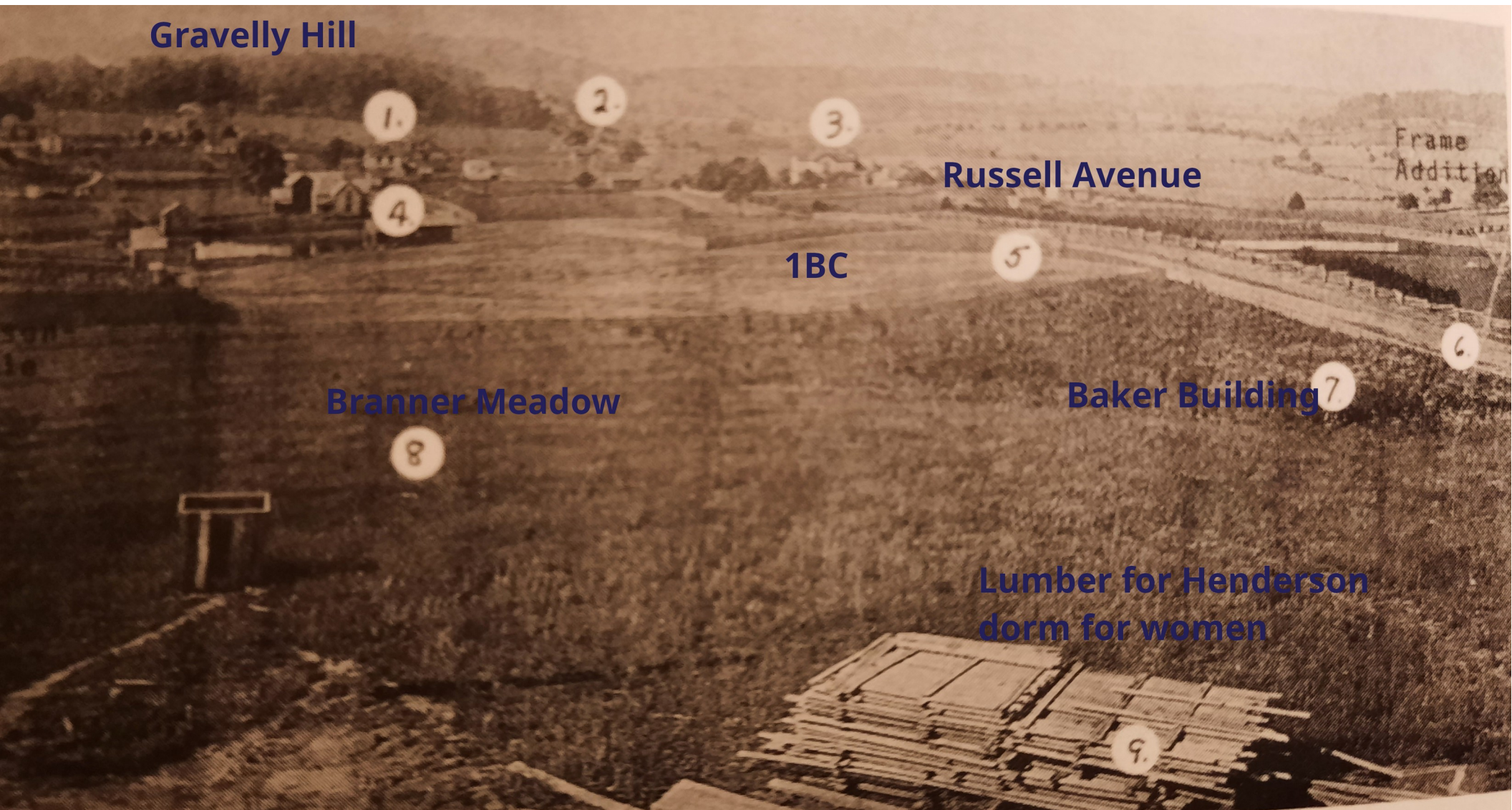
Auditorium stage
doubled as a
basketball court

Faced current Russell
Avenue

Based at
approximately the
same location as
current Henderson
Humanities Building
(Henderson #3)

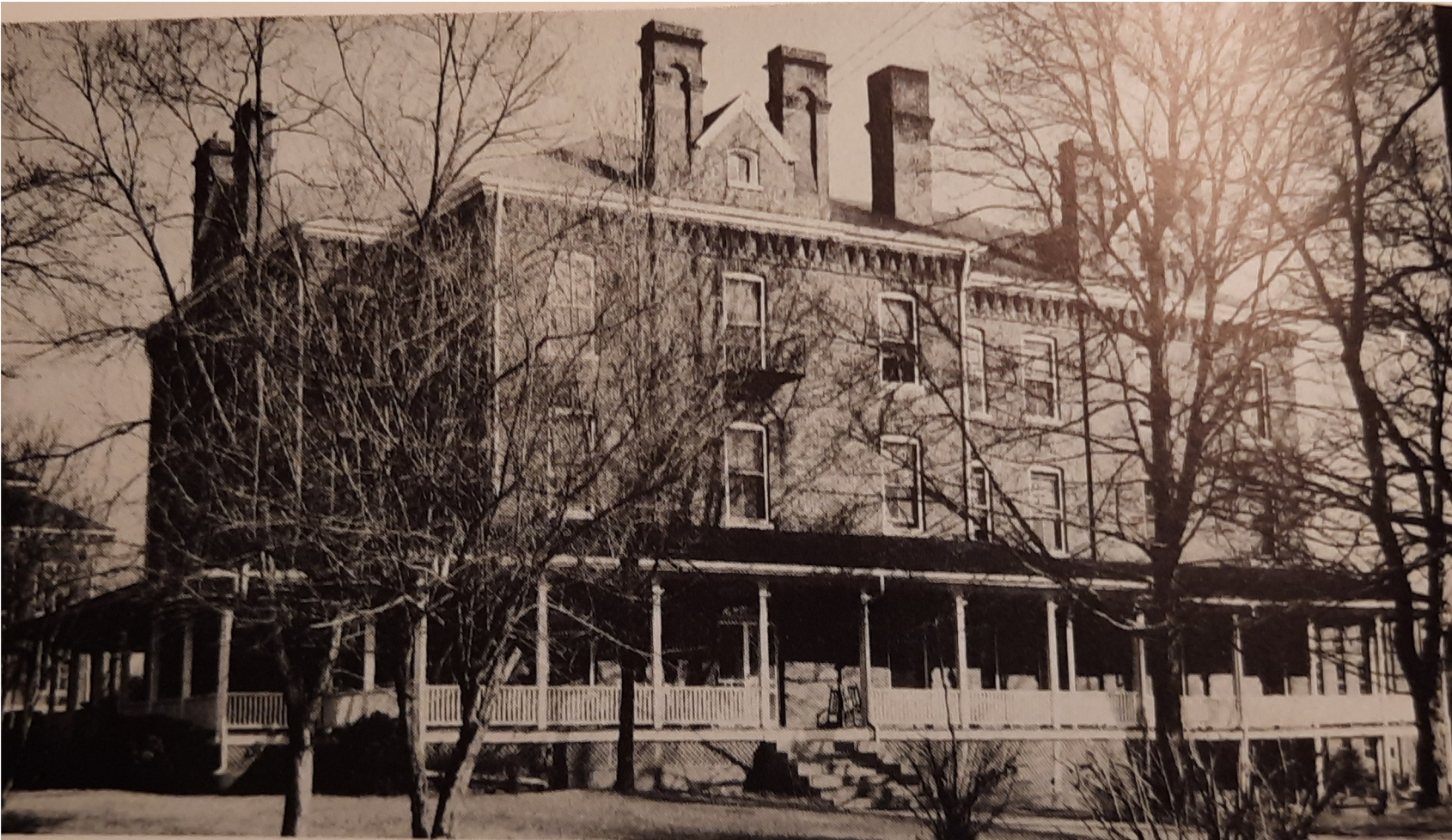
View is from NW (Fite
Admin Bldg)

Henderson Dorm for women 1899



Preparation in 1898

View is from location to the south



Henderson Dorm for women 1899

Involved the demise of the three original buildings for bricks

Location was at present Maples Library

Mabel Starnes served as matron and Religion professor

Housed 70 young women

View is from W (Russell Ave)

Males resumed residence in Carson Hall



Sarah Swann Hall for women

Completed in 1904

Financed and construction supervised by COL A R Swann

Owned by Swann until 1914

Original arrangement

was for young ladies to learn domestic skills and thereby pay for their boarding
Students were grouped in 10s and had charge of meals and cleaning once every several days

Water supply via pump from Mossy Creek up Davis Street and across to cistern

View is from SE (from Russell Ave)



Davis Hall for men

Completed in 1907

Renovated in 1924

Housed 70 young
men

Located at
present Catlett
Tennis Center

View is from W
(Branner Ave)

Additional Mining
Properties
referenced in
1913?

New cafeteria
added to Carson
College bldg
funded by Civil
War reparation



Henderson #1 Fire

Burned 13
December 1916

View is from SE
(from current
Chambliss Bldg)

C-N faced possible
move to
Morristown

Shut down by W. T.
Russell

Move Opposed by
students (1917
O&B quote (Hale))



New Henderson Admin Bldg (Henderson #2)

Same location as
Henderson #3

Completed in 1919

View is from SW (from
current Library)

Would last until 1974

Carson and Newman 1919 Recap

Two sections of
campus

Still has Preparatory
Department

No original buildings

Now in Jefferson City

About 500 students

Gratitude to the following Sources

Edgar Cook, author
David Needs, C-N History
Estle P Muncy, MD, Jefferson County author
Clive Smith, Jefferson County historical author
Isaac Newton Carr, Dean, C-N History
Al Lang (and Linda Gass), Curator C-N Historical Collection
Perry-Castaneda Map Library, University of Texas
Carolyn Craig Williams Starnes Carr, Mothah